



Date: July 2, 2024

Preparedness Levels & Alaska Fire Activity

Alaska	5
National	3

Light Initial Attack Activity
New Fires and Acres: 6 fires for 81 acres

There are currently 19 staffed fires with 803 personnel. Yesterday's large fire growth was ~27,000 acres.

#900/Grapefruit Complex (TAD/UYD): AA-0AX

#318(TAD): ASM-K9, ASM-K7, AA-0AX, FB-208/209/218/219, S-261/263/285/286

#326(DAS): AA-0AK and S-285/286

#334(GAD): Rolled J-90 w/ 12 SMKJs (dropped 4), AA-201 and FB-222/223

#335 (GAD): AA-201

#337 (GAD): Deployed last 8 SMJ's from J-90, FB-222/223

Prioritized Incident Details

Top 12 Alaska Priority Summary Based on Most Recent 209's																			
New and emerging initial attack within Alaska is #1																			
Priority	Unit	Seq. #	Incident	Descriptive Location	Size in Acres	Yesterday's Acres	Change Since Last 209	% Contained/Completed	Expected Contain/Complete Date	Suppression Strategy	Complexity (Incident Management Organization)	IC	Total Personnel	Crews Assigned			Helicopters Assigned		
														T-1	T2	T2IA	T-1	T-2	T-3
1	AKDEP	318	Riley	1 mile north of Denali National Park entrance.	353.0	300.0	53.0	500%	7/31	Full Suppression	Type 3 Incident	Greg Conaway - ICT3 Zach Alexakis(t) - ICT3	45		1			1	1
2	AKDNS	900	Grapefruit Complex	30 miles NE of Fairbanks on both sides of Highway 2.	58,153.0	40,857.0	17,296.0	0%	10/30	1/0	Type 3 Incident	Peter Butteri, IC Jake Livingston IC(T)	237	6	3				
3	AKDNS	312	Montana Creek	15 miles south of Talkeetna, AK	150.0	150.0	-	40%	9/30	Full Suppression	Type 3 Incident	Timothy Sherwin, ICT3	96	1	2				
4	AKTKCN	169	Portage	1 mile south of Georgetown, AK.	823.4	823.4	-	39%	8/1	Point Zone Protection	Type 5 Incident	B.Quimby ICT3	34						
5	AKFWQ	119	McDonald	9 miles southwest of Salcha	137,406.0	122,362.0	15,044.0	0%	10/1	Point Zone Protection	Type 4 Incident	IC-T Schumacher	76	3				2	
6	AKDNS	252	Deception Pup	3 miles northwest of Central, Alaska	121.0	121.0	-	90%	10/1	Full Suppression	Type 5 Incident	Julia Lauch ICT3 and Nolin Page ICT3t	78	1	1			1	
6	AKDHCN	259	Flasco	Near Circle Alaska	9.5	9.0	0.5	0%	7/5	Full Suppression	Type 3 Incident	Idaho Team 3, Julia Lauch IC	0						
7	AKDNS	276	Gold King Creek	38 miles ESE of Anderson	2,914.0	2,803.5	110.5	0%	7/10	Point Zone Protection	Type 5 Incident	Stark, Jeffery	34		2				
8	AKDNS	213	Deep	4 Miles S of Lake Minchumina	13,769.0	13,222.0	547.0	0%	9/28	Point Zone Protection	Type 4 Incident	Rishavy	45		4			1	3
9	AKSWR	209	Naluk	16 Miles SE of Kiana	12,524.1	1,200.0	11,324.1	0%	10/1	Point Zone Protection	Type 3 Incident	E. Butterfield ICT4 Alaska Fire Service	24						
10	AKDNS	240	Main	13.5 Miles SW of Ruby	9,250.9		9,250.9	0%	10/1	Monitor	Type 4 Incident	Dustin Widmer FMO (Detail) Alaska Fire Service	0						
11	AKDNS	311	Tustumena Lake	19.3 Miles south of Soldotna	35.2		35.2	10%	7/10	Full Suppression	Type 3 Incident	Scott Beninati	0						
12	AKKAP	143	American Creek	25 miles northeast from King Salmon	4,650.5	4,650.5	-	0%	8/30	Monitor	Type 5 Incident	Seth Ross	0						

Source: AMAC Incident Prioritization List, ICS-209s

Resources

Aviation within Alaska	Total
Air Tactical	7
Air Tankers	3
FireBosses	8
Scoopers	4
SMKJ	5
Utility AC	10
Helicopter, Type 1	1
Helicopter, Type 2	15
Helicopter, Type 3	10
Total Aircraft	63

Crews Committed within Alaska	Total
Type2IA	5
Type 1	13
Type 2	8
Type 1 Module	1
Type 2 Module	2
Suppression Module	2
Total Crews	31

Incident Mangement Teams in Alaska	Total
CIMT	2
IMT 1	
IMT 2	
IMT 3	2
Total IMTs	4

AVIATION

-**Bell Mediums for DOI/USFS on a tactical pause (anticipated through EOS tomorrow)**.

-FB-247 last day yesterday. FB-246 will marry up w/ FB-218/219 and travel as a trio.

-AA-0AK went O/S yesterday (flat tire).

AIRSPACE/TFRs

#900 Grapefruit Complex (UYD/TAD): 4/5782

#312 Montana Creek (MSS): 4/5688

#318 Riley (TAD): 4/6067 - **NEW**

#119 McDonald (MID): 4/6081- **NEW**

SMOKEJUMPER

Anticipated smokejumpers available: ~ 24

~ 84 SMKJ's committed

Smokejumper Demobilizations

Yesterday: #223(GAD): 5; #253(UYD)12; #311(KKS): 8

Planned for today:

CREWS

- 5 AK contract crews committed and 4 available GACC
- Pioneer Peak available today 7/2
- Midnight Sun IHC available Friday 7/5
- Chena IHA available Saturday 7/6

NICC JET MOVEMENT

Jet Mobilizations:

Jet #1 – Arrived 6/25, all Crews on incident

Jet #2 – Arrived 6/26, all Crews on incident

Jet #3 – Arrived 6/29, all Crews on incident

Jet #4 – Arrived 7/1, crews mobilizing to incidents

Jet #5 – Mobilizing 7/3 – 2 IHC, 2 T2IA

OVERHEAD/TEAMS

- 85 pending overhead requests
- CIMT – AK Team 2 Sanford - ordered for #318(TAD) Riley – in brief today 7/2
- CIMT - AK Team 3 Butteri - assigned to assigned to Globe #253(UYD). Also managing the Grapefruit Complex #900(UYD)
- IMT3 – WY Team 3 assigned to Montana Creek Fire #312(MSS)
- IMT3 – ID Team 1 assigned to Central Group - Deception Pup #252(UYD) and Flasco #259(UYD)
- AK CIMTs available GACC only

Source: IROC Reports, [National Smokejumper Status Report](#), AK Incident Aircraft Tracking Spreadsheet & AICC Documentation, 2024 IMT Tracking Report

Weather Summary

Strong high pressure over Interior Alaska will persist for another day before it shifts southward. Above normal temperatures are forecast across the Interior today, though cooling with damper weather is expected for the southern mainland.

There is a chance for isolated showers and thunderstorms across the southern Interior today, with most activity near the ALCAN border.

Southern Alaska will see easterly flow aloft to feed spotty showers, leaving many dry areas, particularly on the west sides of terrain features due to downsloping. The Mat-Su Valley, Anchorage Bowl, and western Kenai area are likely to stay fairly dry.

High pressure will get shunted to the south this week. This sets up a tight pressure gradient over northern Alaska as an Arctic low approaches the northwest coast. These westerly winds may make for some extreme fire weather concerns on Tuesday and Wednesday, bringing Red Flag conditions to the northern Interior. Wetting rains will follow these winds but will take some time to work across the state, leaving the northeast Interior vulnerable to rapid fire spread beginning Tuesday.

Source: Alaska 7-Day Outlook

Fuels/Fire Potential

Very High and Extreme Fine Fuel Moisture Codes (FFMC) across the Interior means that surface fuels are receptive to ignitions, both human and natural. Over the next few days, Initial Spread Indices will rise from Very High to Extreme across much of the northern Interior, indicating rapid spread potential is likely.

Spruce Adjective Rating keys in on the same areas across the northern Interior, with the Yukon Flats and central Interior having Extreme conditions.

The Yukon Flats continue to have the highest indices throughout all of the burnable fuel column, with Duff Moisture Codes and Buildup Indices showing Very High and Extreme. With lightning in the forecast continuing for two more days, new ignitions and rapid spread are likely.

Rains expected late in the week will bring big changes to these fuel conditions, moderating the fine fuels and upper duff very quickly. Source: Alaska 7-Day Outlook

South Slopes Of The Eastern Brooks Range-Dalton Highway Summits- Yukon Flats-

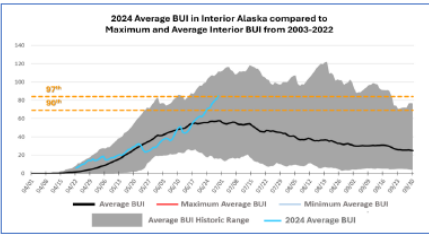
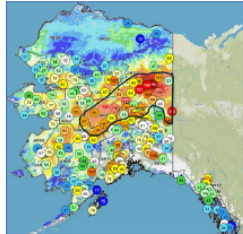
**...RED FLAG WARNING REMAINS IN EFFECT FROM 2 PM THIS AFTERNOON TO
10 PM AKDT THIS EVENING...**

Fuels and Fire Behavior Advisory Central to Northeast Interior Alaska *Valid: June 29 – July 12, 2024*

Subject: Exceptional landscape flammability and widespread ongoing large fire growth.

Discussion: The Buildup Index (BUI) is the best indicator of seasonal severity and overall flammability of fuels in Alaska. It represents deeper drying in the duff layers and greater fuel availability. Large fire growth generally occurs from mid-June to mid-July surrounding the summer solstice when long days and rapid drying can produce elevated BUIs. Southwest Alaska normally experiences shorter periods of high flammability due to marine influences but has had numerous fires burning since the middle of June across a wide swath of the state. The area of most significant fire growth is occurring from the southern central Interior, through the northeast Interior to the Canadian border. Hot weather and a dry air mass has put BUIs at near-record levels.

Difference from normal conditions: The attached graph shows the current 2024 BUI trend for the Interior of Alaska compared to other busy fire seasons. 2024 has been above average BUI since May 31, and higher than 2019 levels for the same period. Convective precipitation has moderated values in some areas but forecast high pressure will rapidly increase values. Much of the landscape has experienced large fire growth earlier than usual. Multiple days of wetting rain adding up to more than one inch will be needed for lasting relief.



Concerns to Firefighters and the Public:

- Spruce stands are extremely flammable, will ignite readily, exhibit rates of spread more than one mile per hour, torch, and spot prolifically up to ¼ mile or more, and exhibit intense crown fire behavior.
- Temperatures above 80 degrees and RH below 30% are important thresholds for rapid spread and crown fire behavior. Strong winds are not required for large fire growth.
- Long-term drying has stressed green fuels and is encouraging spread into riparian areas and less flammable hardwood forests. These fuel types may no longer be barriers to fire spread.

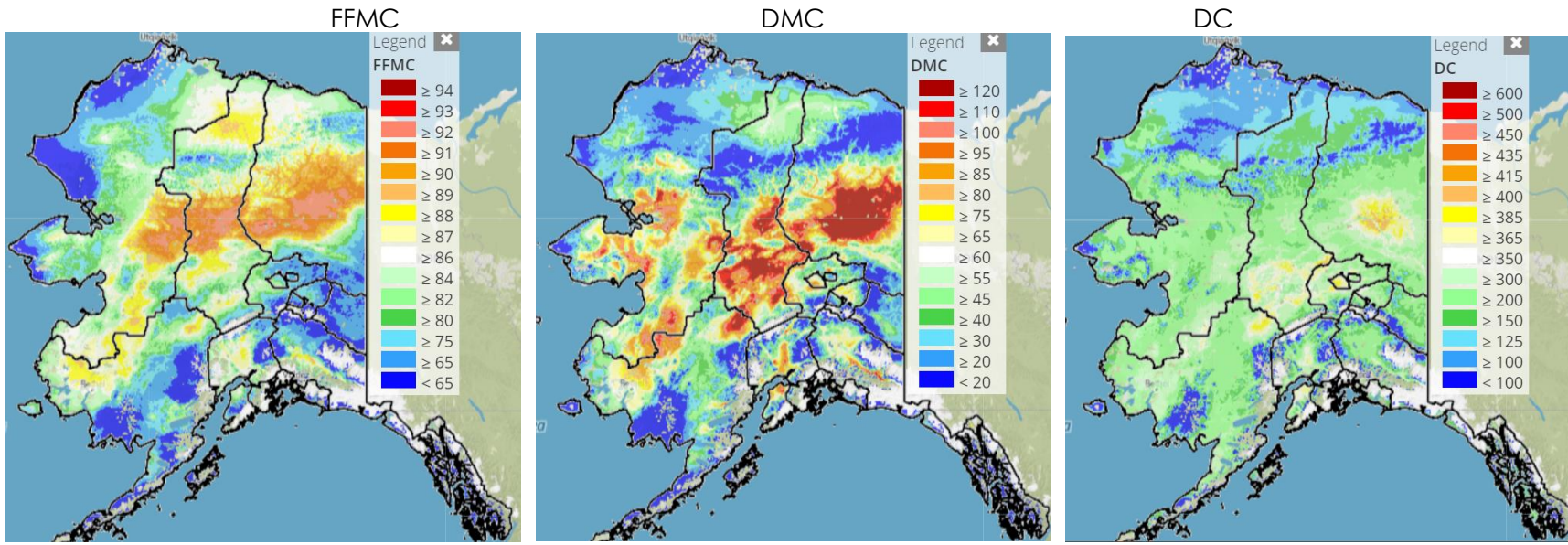
Mitigation Measures:

- Ensure that you can recognize hazardous fuel types including tundra that is exceptionally dry.
- Understand the triggers and thresholds for problem fire behavior.
- Monitor forecasts and indices to anticipate areas of increased flammability and extreme fire behavior.
- Maintain clear communications when working around active fires.

Area of Concern: Southern central to northeastern Interior to the ALCAN border

Issued By: Alaska Interagency Coordination Center Predictive Services

Click on the following images for direct links to the maps.



For additional fuels information visit <https://akff.mesowest.org/>

Sources: AICC Predictive Services – Fuels/Fire Danger web page, Alaska Fire & Fuels web page

The Coffee Brief is posted at PLs 4 and 5 only.

